

# GOING BEYOND 'AI DETECTS DISEASE X FROM Y DATA'

Oguzhan Gencoglu - Cofounder & Head of AI at Top Data Science

HIMSS Eurasia 2019

# TOP DATA SCIENCE



**HELSINKI, FINLAND**

**20 AI SCIENTISTS**

**60+ AI PROJECTS**

AI as a Service



AI APPLIED  
TO A  
HEALTHCARE CASE



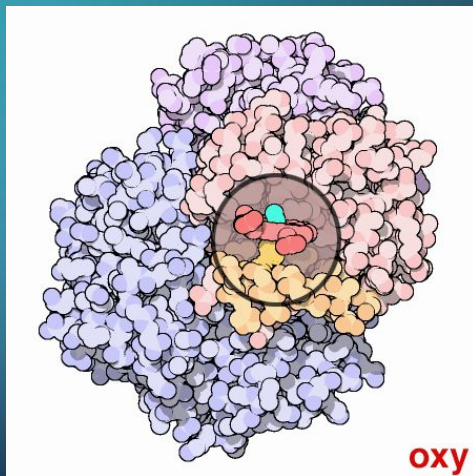
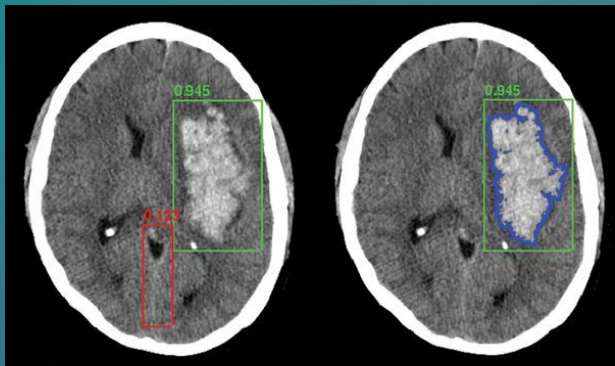
AI COMPARED  
TO DOMAIN EXPERTS



RANDOMIZED CONTROL TRIALS  
OF AI



# AI APPLIED TO A HEALTHCARE CASE





# AI COMPARED TO DOMAIN EXPERTS



nature  
medicine

Letter | Published: 20 May 2019

## End-to-end lung cancer screening with three-dimensional deep learning on low-dose chest computed tomography

tomography imaging was not available, our model outperformed all six radiologists with absolute reductions of 11% in false positives and 5% in false negatives.

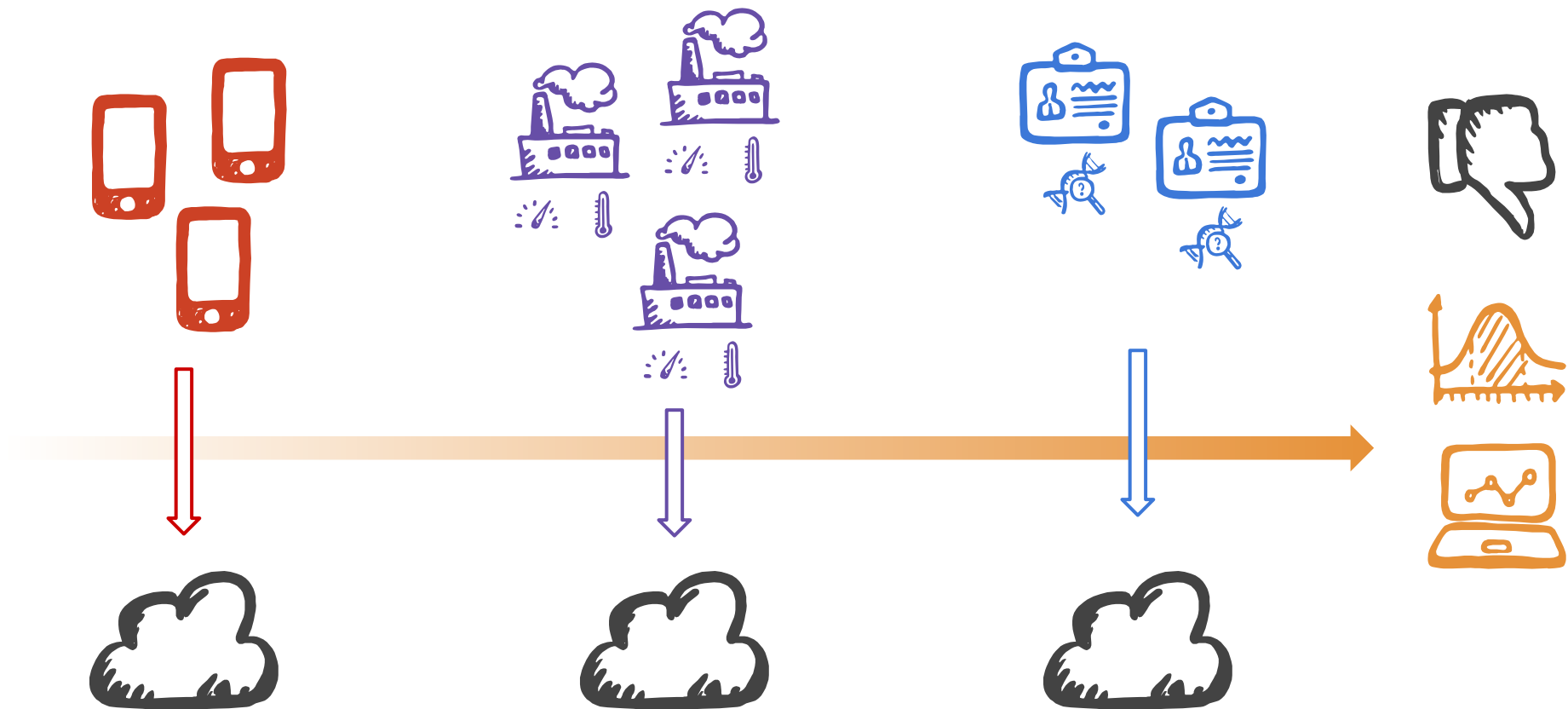




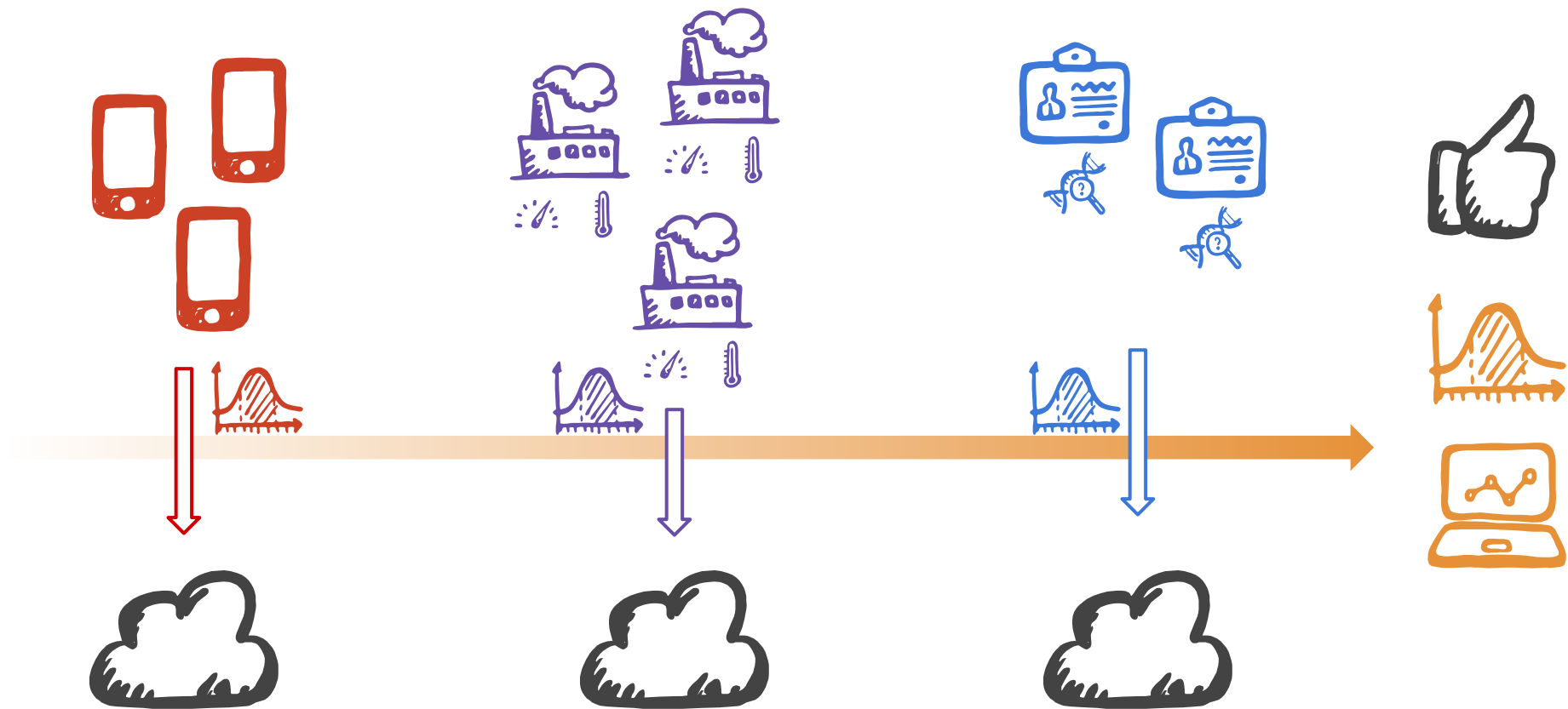
# PRIVACY PRESERVING AI



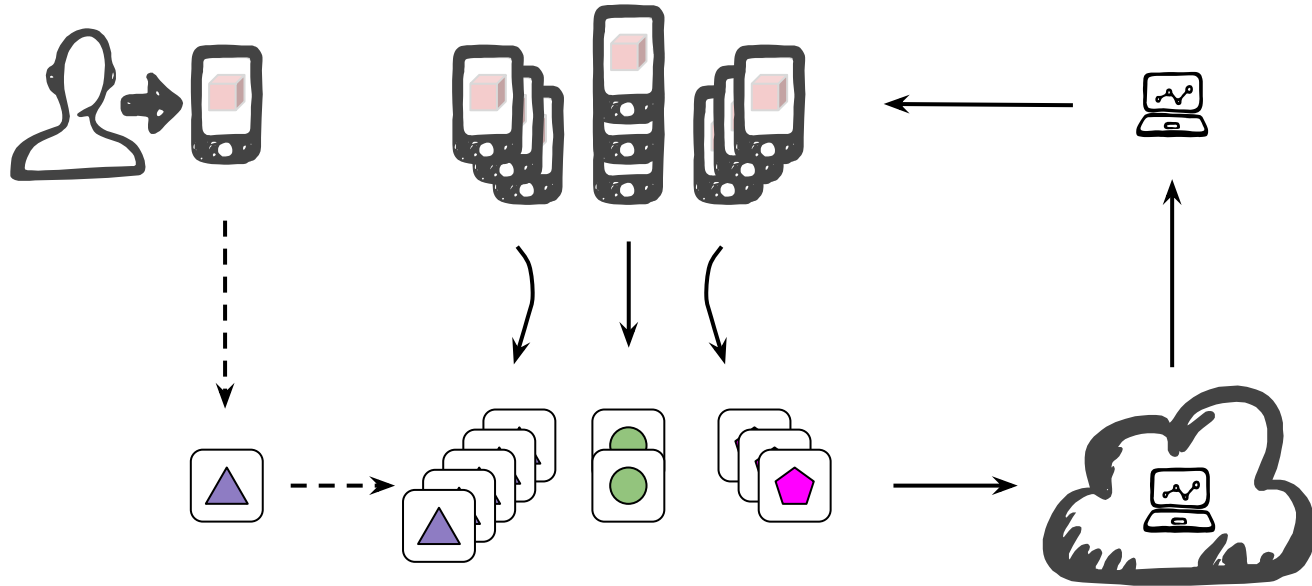
# FEDERATED AI





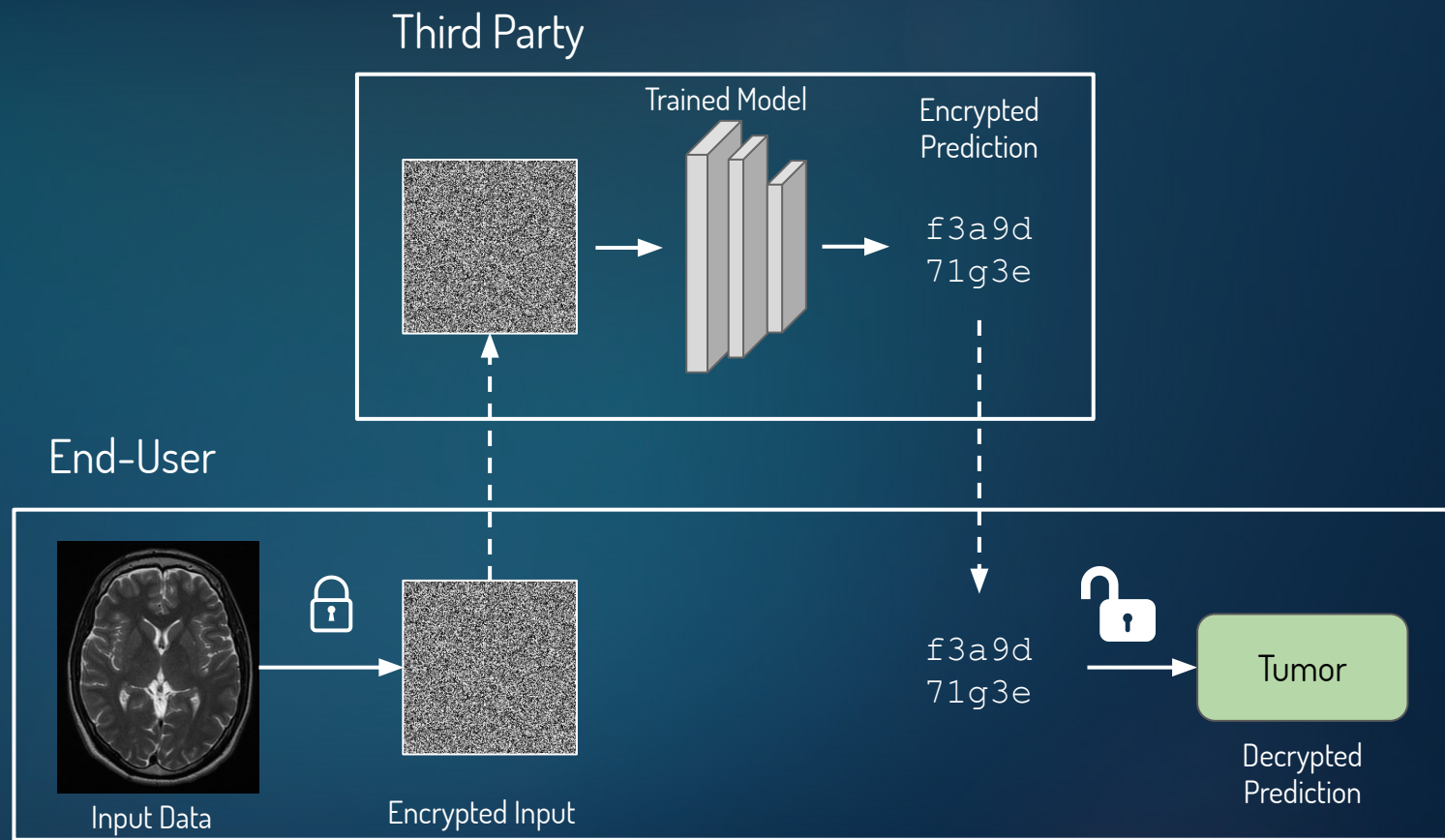


# Federated Learning



The background features a dark blue gradient with several bright, glowing blue and teal light streaks that create a sense of motion and depth. A solid dark blue rectangle is positioned in the center, serving as a backdrop for the text.

# AI ON ENCRYPTED DATA



The background features a dark blue gradient with several bright, glowing blue and teal light streaks that create a sense of motion and energy. A solid dark blue rectangle is centered on the page, serving as a backdrop for the text.

# GENERATING DATA WITH AI

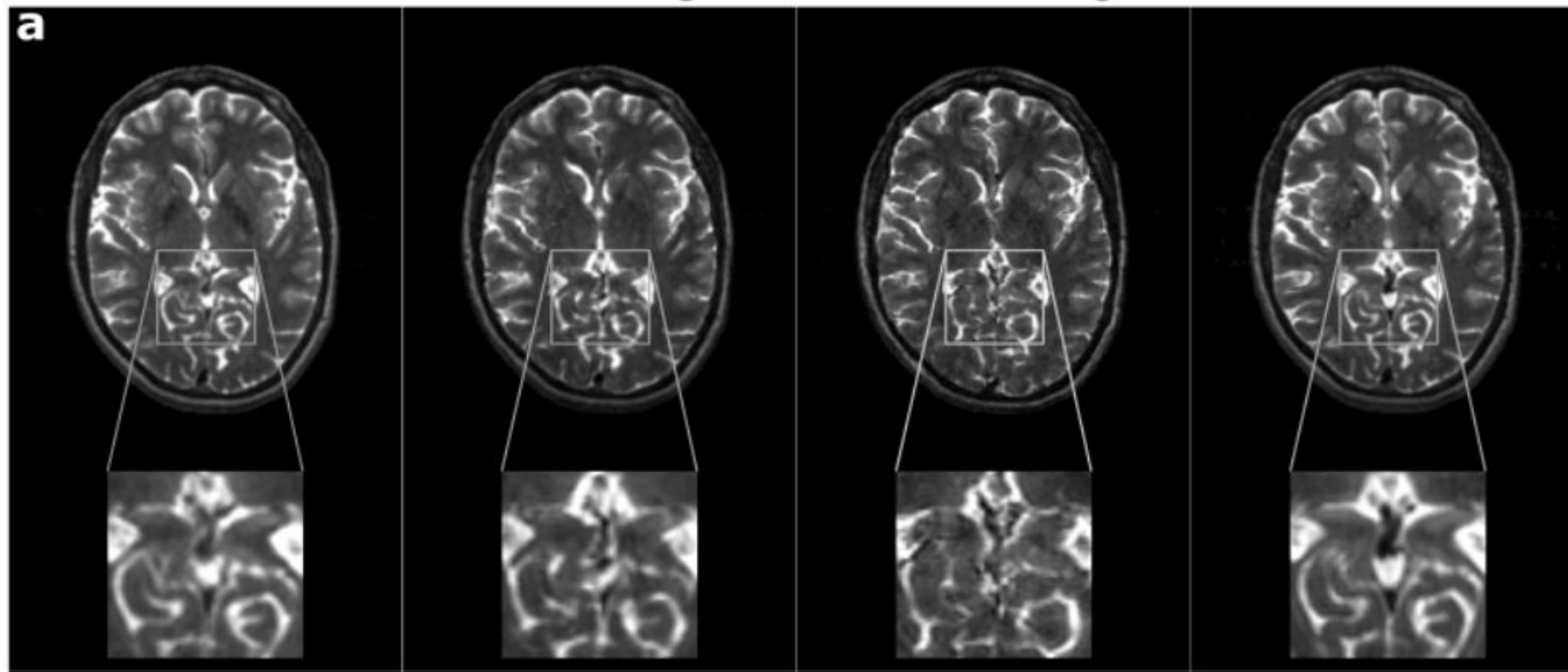
**pGAN**

**cGAN<sub>reg</sub>**

**cGAN<sub>unreg</sub>**

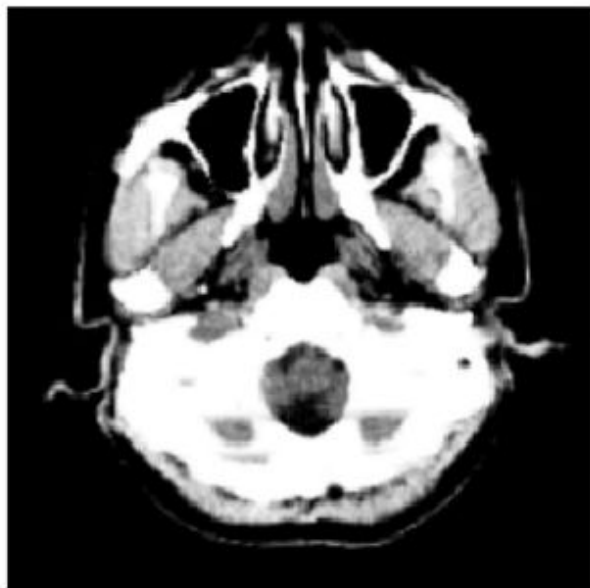
**Reference**

**a**

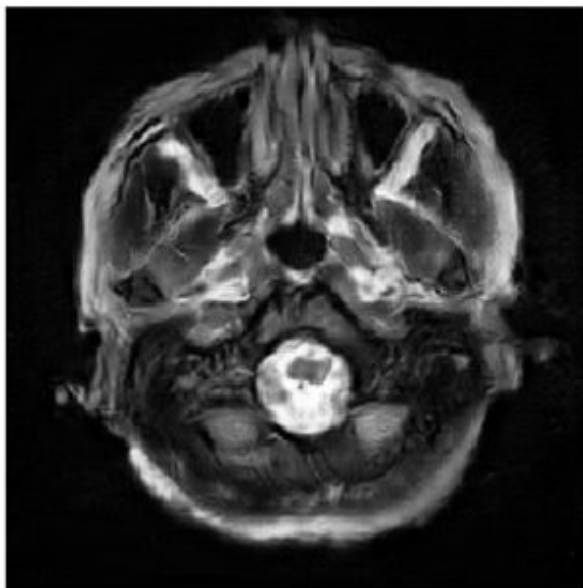




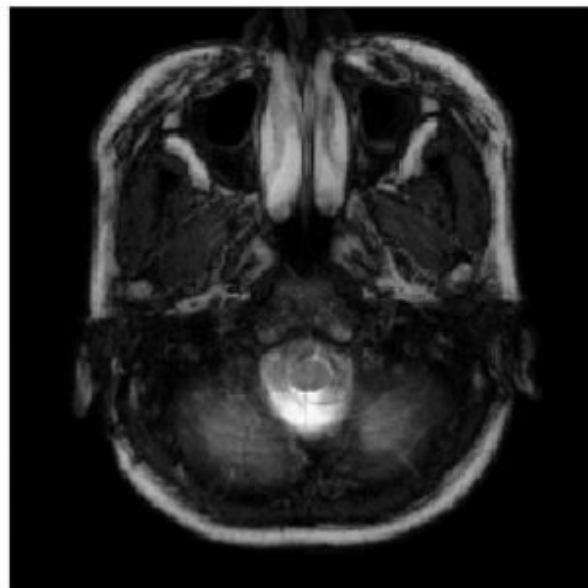
CT

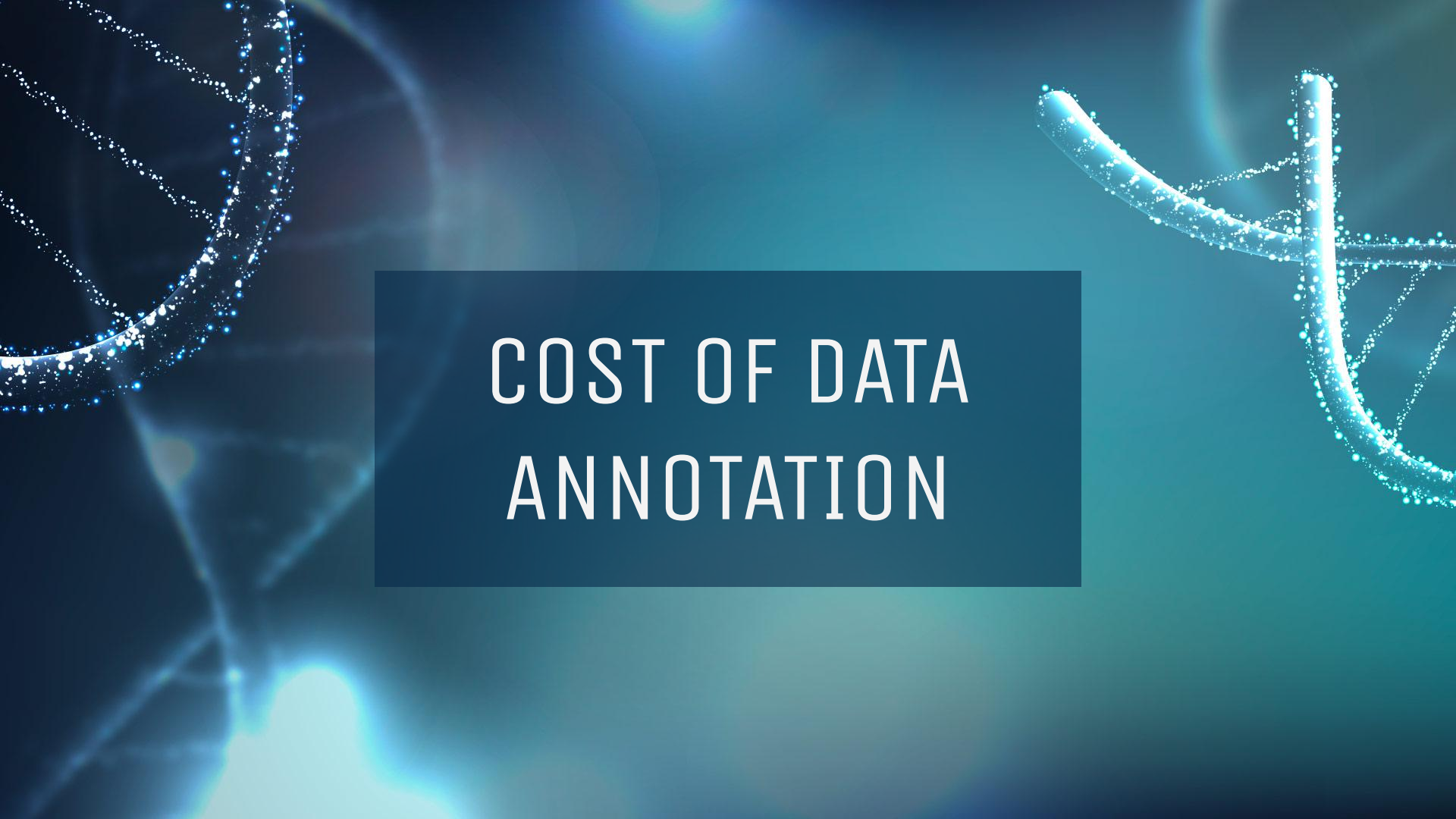


Synthesized MR



Ground Truth MR





# COST OF DATA ANNOTATION

# Improving Prostate Cancer Detection with Breast Histopathology Images

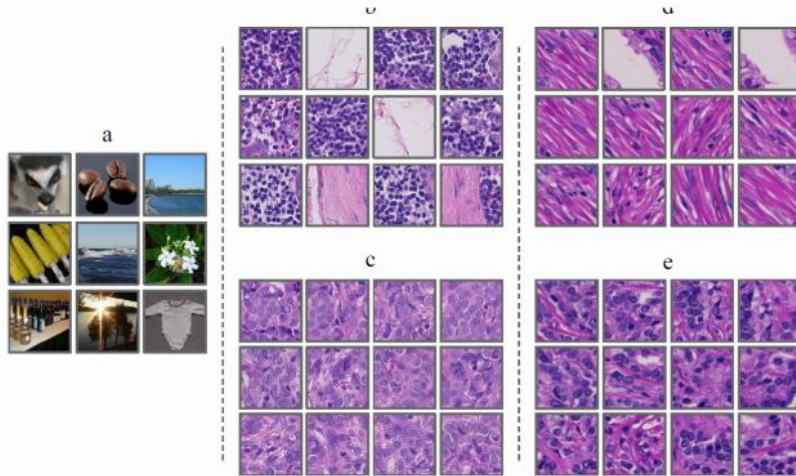
Umair Akhtar Hasan Khan<sup>1</sup>, Carolin Stürenberg<sup>2</sup>, Oguzhan Gencoglu<sup>1</sup>, Kevin Sandeman<sup>3</sup>, Timo Heikkinen<sup>1</sup>, Antti Rannikko<sup>4</sup>, and Tuomas Mirtti<sup>2</sup>

<sup>1</sup> Top Data Science Ltd., Helsinki, Finland

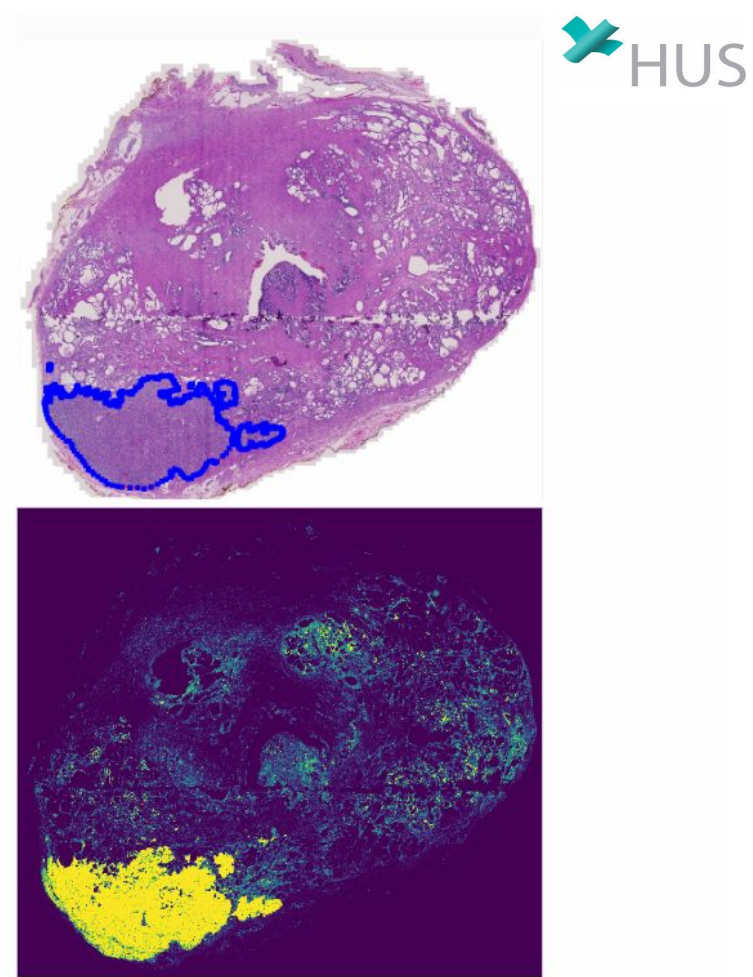
<sup>2</sup> University of Helsinki, Faculty of Medicine, Department of Pathology and Research Program in Systemic Oncology, Helsinki, Finland

<sup>3</sup> Department of Laboratory Medicine, Department of Pathology, Skåne University Hospital, Malmö, Sweden

<sup>4</sup> Helsinki University Hospital, Department of Urology and Research Program in Systemic Oncology, Faculty of Medicine, University of Helsinki, Helsinki, Finland



**Fig. 2.** Examples of data from a. ImageNet b. benign breast tissue c. cancerous breast tissue d. benign prostate tissue e. cancerous prostate tissue.





TRANSPARENT,  
EXPLAINABLE  
&  
ACCOUNTABLE  
AI





Does your car have any idea why my car pulled it over?

# THANK YOU

