

the future of healthcare

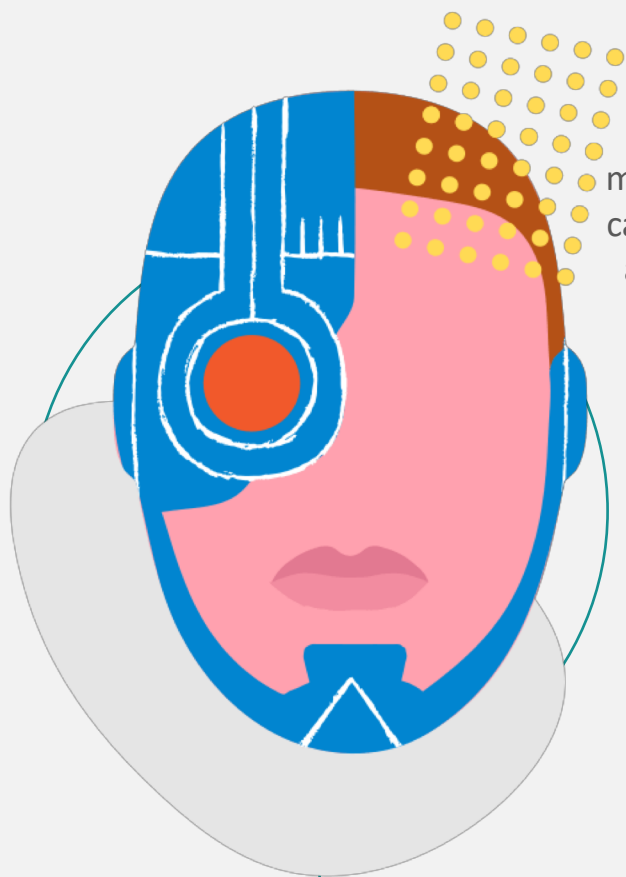
Yasemin Şahin

TURBOARD

Augmented Analytics Pioneer
[linkedin.com/in/yaseminsahin](https://www.linkedin.com/in/yaseminsahin)

Understanding & Designing





"By 1985,
machines will be
capable of doing
any work Man
can do."

Herbert A. Simon



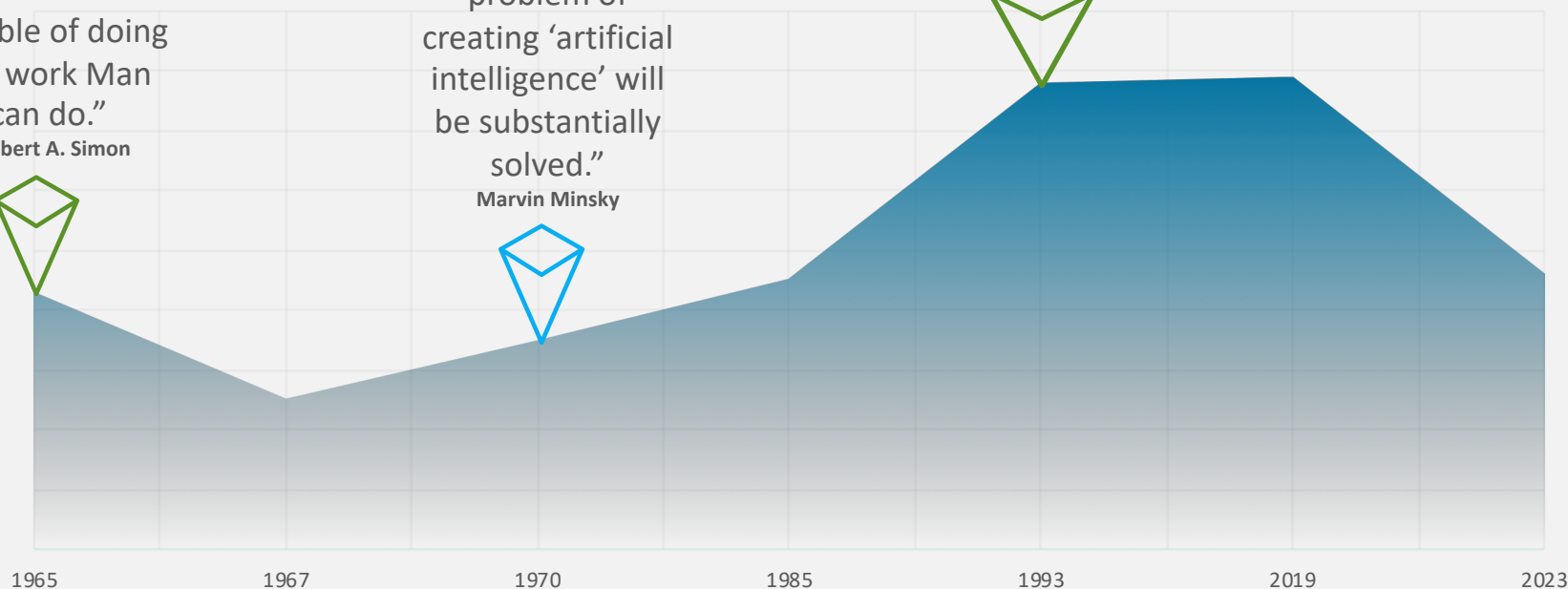
"Within a
generation the
problem of
creating 'artificial
intelligence' will
be substantially
solved."

Marvin Minsky



"Within thirty years, we will
have the technological means
to create superhuman
intelligence. Shortly after, the
human era will be ended."

Vernor Vinge



A Revolution **More Bland** Than
Kubrick's '2001'



ASI

Artificial SUPER Intelligence
“any intellect that greatly exceeds the cognitive performance of humans in virtually all domains of interest”

AGI

Artificial GENERAL Intelligence
machines and operating systems that are conscious, sentient, and driven by emotion and self-awareness. AGI is expected to be able to reason, solve problems, make judgements under uncertainty, plan, learn, integrate prior knowledge in decision-making, and be innovative, imaginative and creative.

ANI

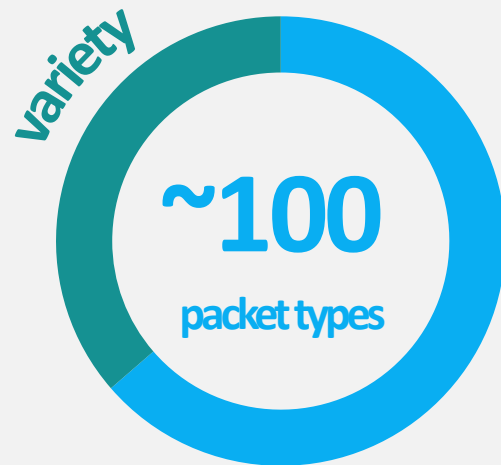
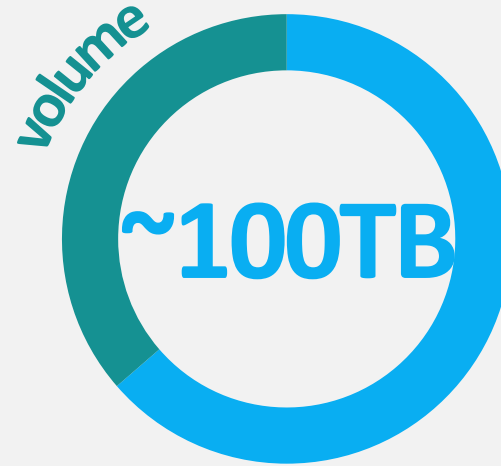
Artificial NARROW Intelligence
Google Assistant, Google Translate, Siri, IBM’s Watson, and so on...



2000 Packets per second day time

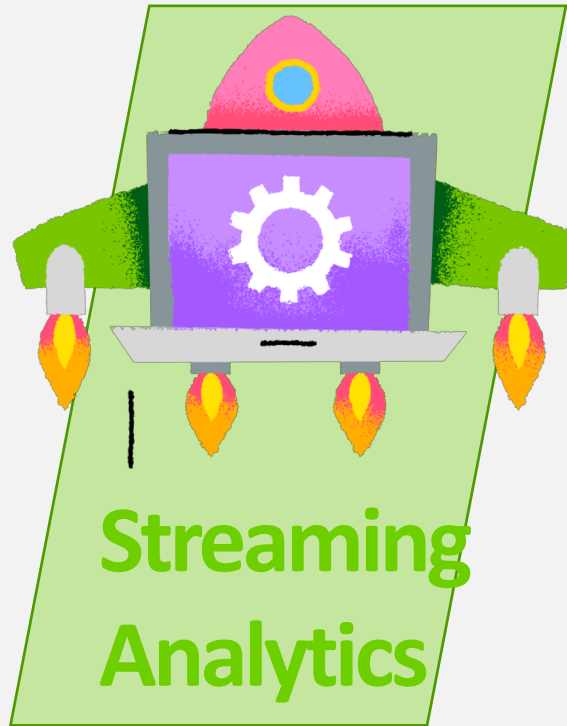


800 packets per second night time



Big data analytics







Physician patient
matching



Clinical guidance using big
data



More work on optimization



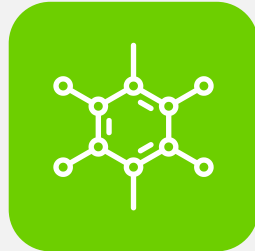
metamorphosis

SiNA Future

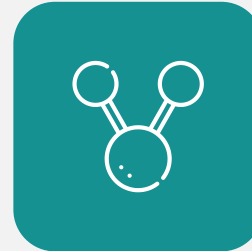
Not too far away, very soon...



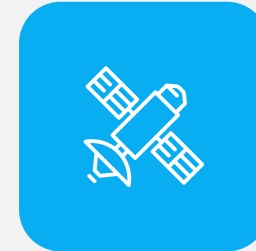
150.000+



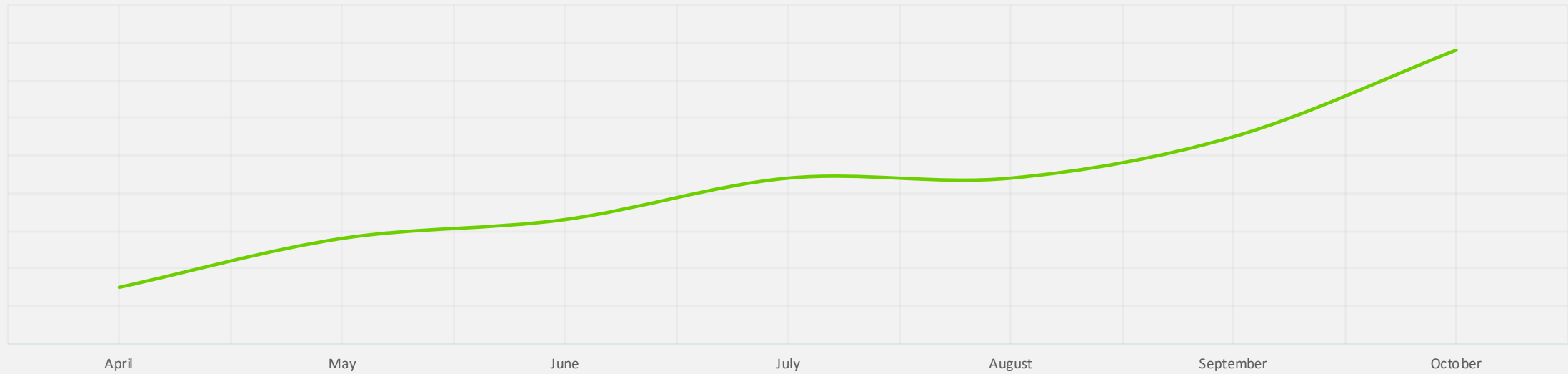
69
datasources

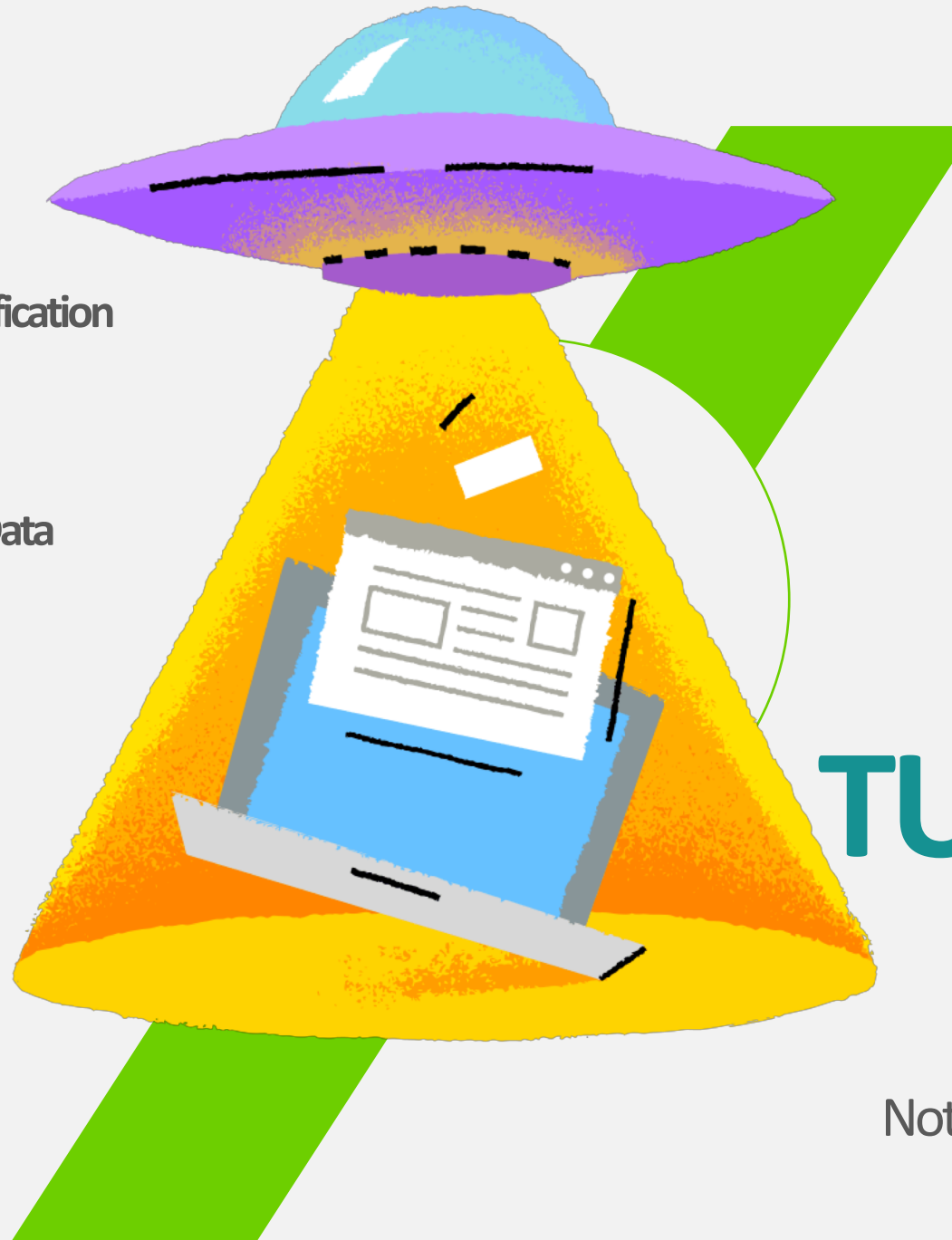


6929
visualizations



33K active
users





Gamification



Augmented Data
Governance



Augmented Analytics

TURBOARD Future

Not too far away, very soon...

Fanatical
Support

Many Features Yet
Easy To Use

Know-how In
Health



Visit turboard.com

TURBOARD

Hospital & Health
Analytics

turboard.com

